

SECTION 2  
Connectivity

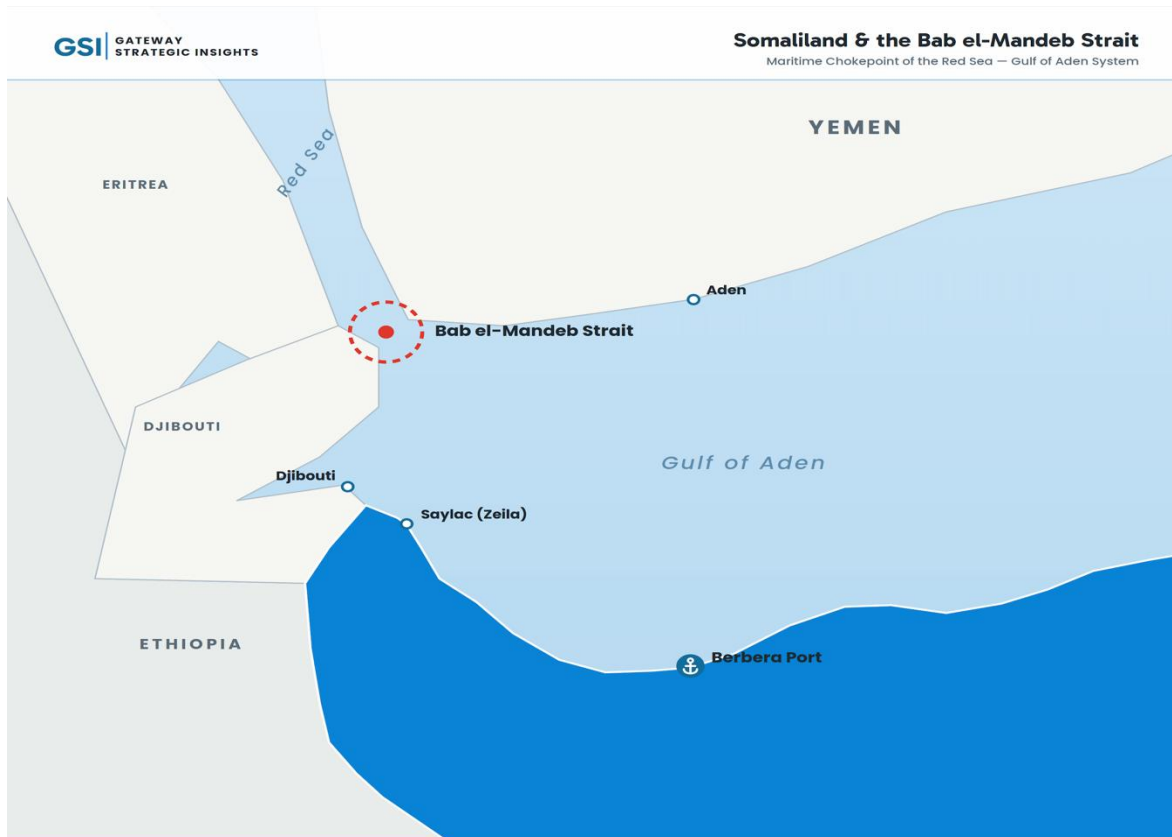
**STRATEGIC GEOGRAPHY AND  
CONNECTIVITY: SOMALILAND'S  
GREATEST COMPETITIVE ADVANTAGE**

Geography is often treated as a background condition in economic analysis. In Somaliland's case, geography is one of the principal drivers of investment potential.

“**Geography is one of the principal drivers  
of Somaliland's investment potential.**

Gateway Strategic Insights

Situated along the Gulf of Aden and adjacent to the Bab al-Mandeb Strait, Somaliland occupies a strategic location connecting Africa, the Middle East, Asia, and Europe. This maritime corridor accounts for a substantial share of global trade and serves as a critical gateway linking the Indian Ocean to the Red Sea and the Suez Canal.



At the center of this advantage lies Berbera Port. Modernized through substantial investment by DP World, Berbera is increasingly emerging as a regional trade gateway capable of serving not only Somaliland but also neighbouring Ethiopia and wider East African markets. The development of the Berbera Economic Zone and the Berbera Corridor further enhances this proposition by linking maritime trade with inland commercial opportunities.

**An integrated regional trade gateway**



For investors, this location creates opportunities in logistics, transport, warehousing, manufacturing, trade facilitation, cold-chain systems, distribution networks, and export-oriented industries. As global supply chains diversify and regional trade integration deepens, Somaliland's geographical position is becoming one of its most valuable economic assets.

**Where the location creates opportunity**

